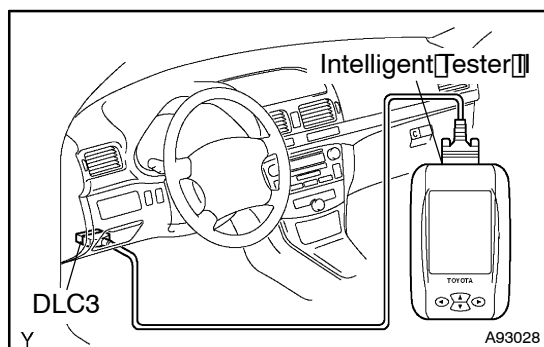


## DTC CHECK/CLEAR

### NOTICE:

Intelligent Tester II only:

When the diagnosis system is changed from normal mode to check mode or vice-versa, all DTCs and freeze frame data recorded in normal mode will be erased. Before changing modes, always check and make a note of DTCs and freeze frame data.



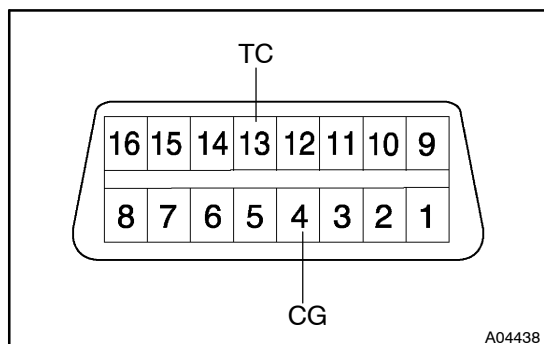
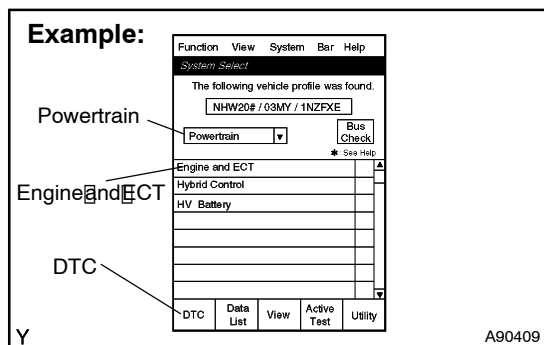
### 1. CHECK DTC (Using the Intelligent Tester II)

- Connect the Intelligent Tester II to the DLC3.
- Turn the ignition switch to ON and turn the Intelligent Tester II ON.
- Select the following menu items: Powertrain / Engine and ECT / DTC.

#### HINT:

If you need help using the intelligent tester II, refer to the instruction manual.

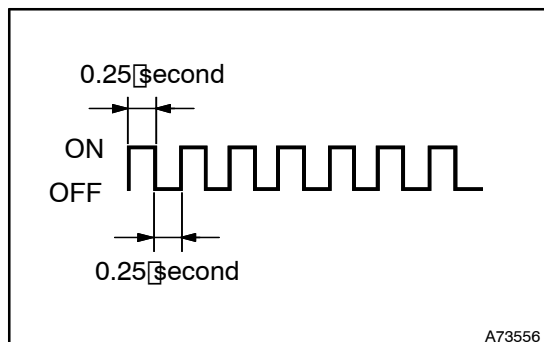
- See page 05-277 to confirm the details of the DTCs.



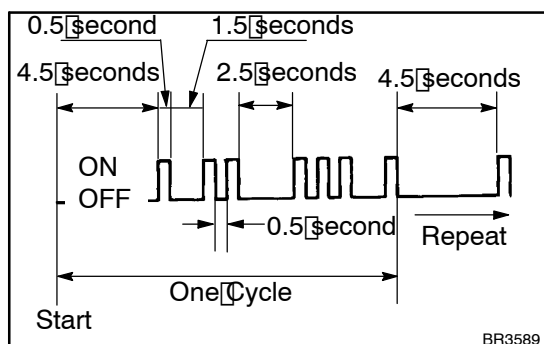
### 2. CHECK DTC (not using the intelligent tester II)

- Turn the ignition switch to ON.
- Using SST, connect terminals 13 (TC) and 4 (CG) of the DLC3.

SST 09843 - 18040



- Read DTCs by observing the MIL. If any DTC is not detected, the MIL blinks as shown in the illustration.



## (d) Example

If DTCs 12 and 31 are detected, the MIL flashes 1 time (for 0.5 second) and flashes 2 times after the 1.5 seconds interval, then, flashes 3 times after a 2.5 seconds interval from the previous DTC and flashes 1 time.

If the interval between the previous DTC and the next DTC is 4.5 seconds, it means the previous DTC is the last one of the multiple string DTCs. The MIL repeats the indication of DTCs from the initial cycle. (Refer to the illustration on the left.)

(e) Check the details of the malfunction using the DTC chart on [page 05-277](#).

(f) After completing the check, disconnect terminals 13 (TC) and 4 (CG) and turn off the display.

## HINT:

In the event that 2 or more DTCs are detected, the MIL will indicate the smaller number DTC first.

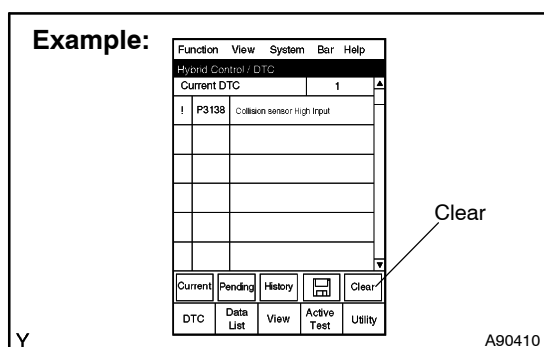
(g) See [page 05-277](#) to confirm the details of the DTCs.

**3. FREEZE FRAME DATA**

- Connect the intelligent tester II to the DLC3.
- Turn the ignition switch to ON and turn the intelligent tester II ON.
- Read DTCs by selecting the following menu items: Powertrain / Engine and ECT / DTC.
- Select a parameter(s) to check the freeze frame data.
- Note down the DTC(s) and freeze frame data.

## HINT:

If you need help using the intelligent tester II, refer to the instruction manual.

**4. CLEAR DTCs AND FREEZE FRAME DATA (using the intelligent tester II)**

- Connect the intelligent tester II to the DLC3.
- Turn the ignition switch to ON (do not start the engine) and turn the intelligent tester II ON.
- Select the following menu items: Powertrain / Engine and ECT / DTC / Clear.
- Erase DTCs and freeze frame data by pressing the YES button on the tester.

## HINT:

If you need help using the intelligent tester II, refer to the instruction manual.

**5. CLEAR DTCs AND FREEZE FRAME DATA (not using the intelligent tester II)**

- Remove the EFI and ETCS fuses from the engine room R/B for more than 60 seconds, or disconnect the battery terminal for more than 60 seconds. When disconnecting the battery terminal, perform the "INITIALIZE" procedure.